



**C27**

SELF-PROPELLED SELF-ERECTING CRANE



**KRAXCLE**  
MOVE FREE, LIFT SMART



WITH JIB IN  
RAISED POSITION

**2,500 kg**

MAXIMUM  
LIFTING CAPACITY

**2,500 kg**

FULL JIB LENGTH LIFTING  
CAPACITY

**700 kg**

# Move Free Lift Smart

"The Kraxcle C27 delivers unmatched performance in a compact design. \*Move Free, Lift Smart\* isn't just a slogan – it's a promise we keep on every construction site."

## PRECISION AND CONTROL

The controls of the Kraxcle C27 are designed for ultimate precision and control. With the ability to operate the tracks independently, the crane can be moved smoothly and accurately.

## OUTSTANDING LIFTING CAPACITY

The Kraxcle C27 stands out with its impressive lifting capacity of 2,500 kg, even with the boom in the raised position. It can still effortlessly lift 700 kg at its full boom length.

## BATTERY PACK

A unique feature of our electric self-erecting cranes is the ability to operate without a direct power supply. This is made possible by the various battery packs that we offer. This makes our self-erecting cranes extremely suitable for construction projects that focus on emission-free construction and meet the strictest sustainability standards.



COMPACT AND MANOEUVRABLE

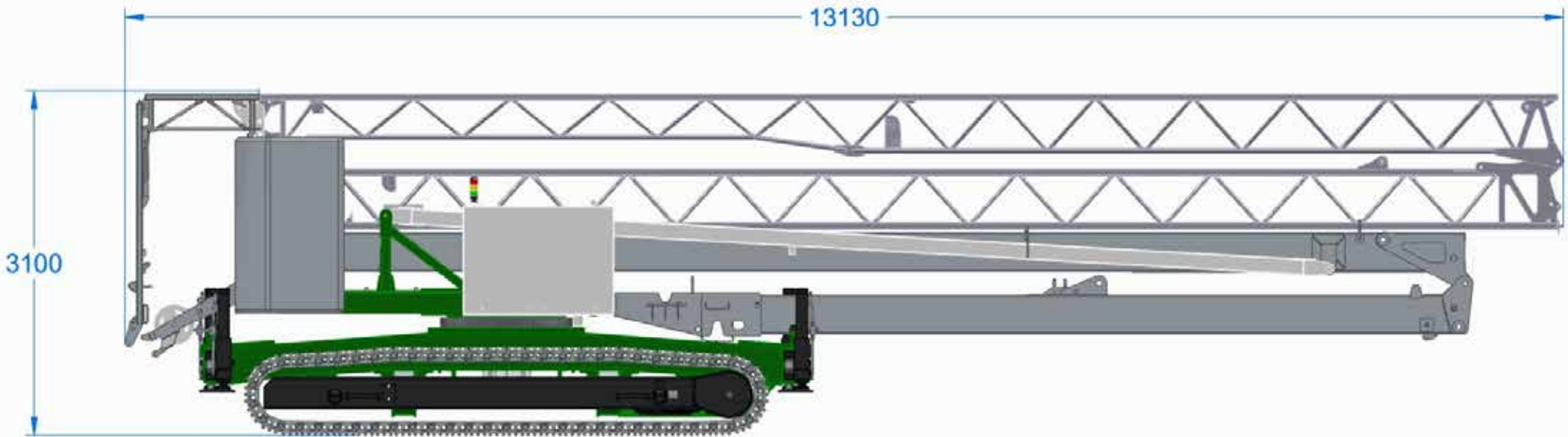
3.10 m height



# C27

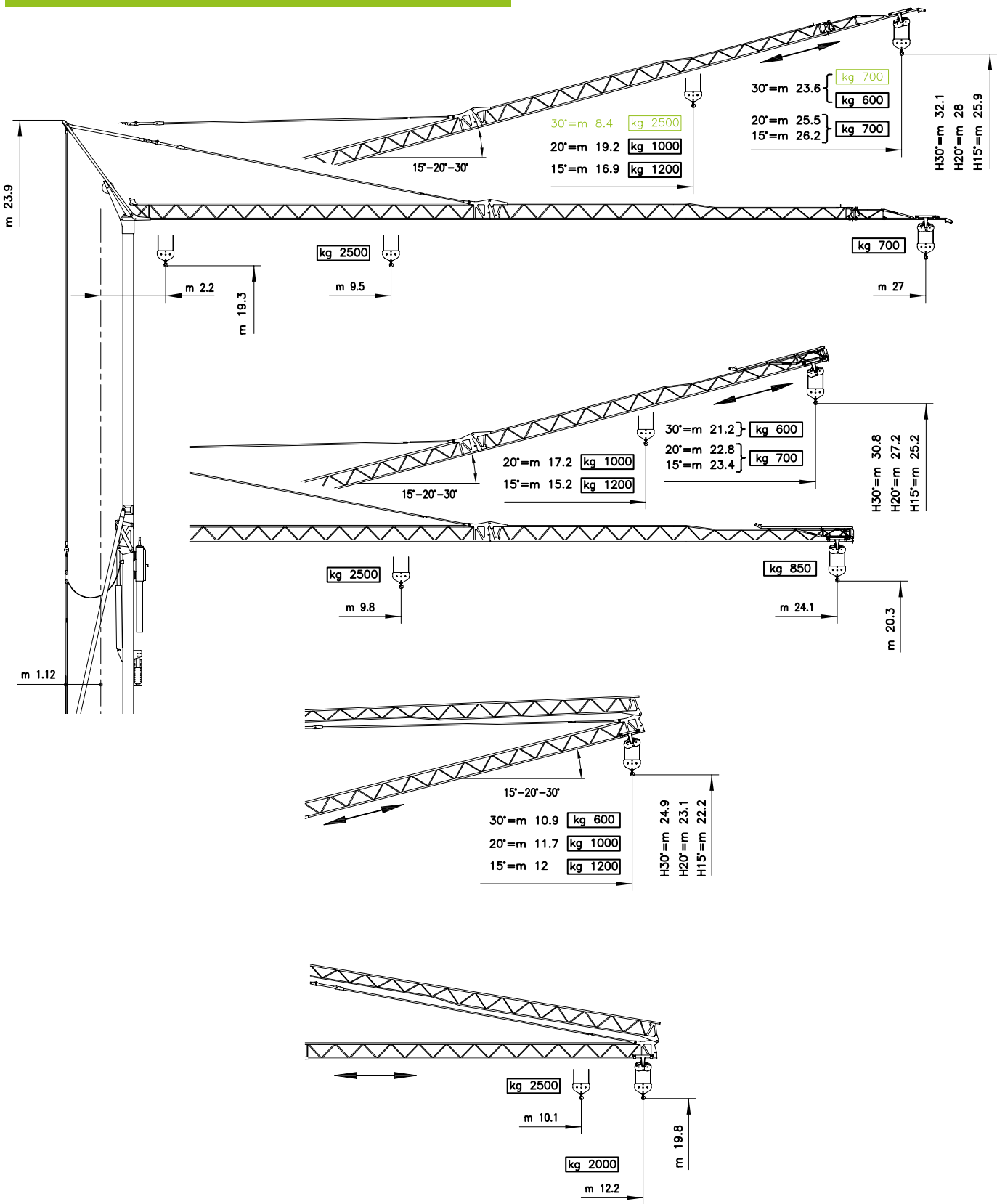
SELF-PROPELLED SELF-ERECTING CRANE

|                    |             |                               |                                   |
|--------------------|-------------|-------------------------------|-----------------------------------|
| Brand:             | KRAXCLE C27 | Power supply:                 | 230/400V                          |
| Maximum radius:    | 27 meters   | Drive:                        | Electric                          |
| Max. tip capacity: | 2,500 kg    | Coating:                      | 2 K paint                         |
| Lifting capacity:  | 700 kg      | Height of transport position: | 3.10 meters                       |
| Hook height:       | 19.5 meters | Power supply options:         | Battery, generator or mains power |
| Stamp size:        | 4 meters    |                               |                                   |
| Stamps:            | Hydraulic   |                               |                                   |



# C27

## SELF-PROPELLED SELF-ERECTING CRANE



### MECHANISM

| BEWEGING<br>MOVIMIENTO<br>MOVEMENT<br>BEWEGUNG<br>MOUVEMENT | VOEDING<br>ALIMENTACION<br>OPERATING VOLTAGE<br>BETRIEBSSPANNUNG<br>TENSION DE SERVICE | PRESTATIES<br>FUNCIONAMIENTOS<br>PERFORMANCES<br>LEISTUNGEN<br>EXÉCUTIONS |  |
|---|--|---|--|
|   |  |   |  |

|   |                | 1 <sup>a</sup> m/1' - kg | 2 <sup>a</sup> m/1' - kg | 3 <sup>a</sup> m/1' - kg | 4 <sup>a</sup> m/1' - kg |           |
|---|----------------|--------------------------|--------------------------|--------------------------|--------------------------|-----------|
| <b>HIJEN</b><br>ELEVACION - HOISTING<br>HEBEN - LEVAGE<br><b>INVERTER</b> | 230 V<br>50 Hz | 3.2 ↑ 6 ↓                | 8 ↑ 11 ↓                 | 19 ↑ 20 ↓                |                          | kW<br>9.2 |
|   |                | 2500                     | 2500                     | 700                      |                          |           |
|   | 400 V<br>50 Hz | 3.2 ↑ 6 ↓                | 8 ↑ 11 ↓                 | 30 ↑ 32 ↓                |                          |           |
|   |                | 2500                     | 2500                     | 700                      |                          |           |
|   |                | 3.2 ↑ 6 ↓                | 21 ↑ 25 ↓                | 39 ↑ 42 ↓                | 46 ↑ 50 ↓                |           |
|   |                | 2500                     | 2500                     | 700                      | 600                      |           |

|   |                      | 1 <sup>a</sup> m/1' | 2 <sup>a</sup> m/1' | 3 <sup>a</sup> m/1' |           |
|---|----------------------|---------------------|---------------------|---------------------|-----------|
| <b>TROLLEY</b><br>CARRILLO - JIB TROLLEY<br>LAUFKATZE - DISTRIBUTION<br><b>INVERTER</b> | 230 - 400 V<br>50 Hz | 15                  | 23                  | 41                  | kW<br>2.2 |
|   |                      |                     |                     |                     |           |

|   |                      | 1 <sup>a</sup> g/1' | 2 <sup>a</sup> g/1' | 3 <sup>a</sup> g/1' |           |
|---|----------------------|---------------------|---------------------|---------------------|-----------|
| <b>ROTATIE</b><br>ROTACION - SLEWING<br>DREHEN - ORIENTATION<br><b>INVERTER</b> | 230 - 400 V<br>50 Hz | 0 → 0.19            | 0.19 → 0.47         | 0.47 → 0.87         | kW<br>2.2 |
|   |                      |                     |                     |                     |           |

Conforme alle direttive  
CEE sul livello acustico  
2000/14/CE

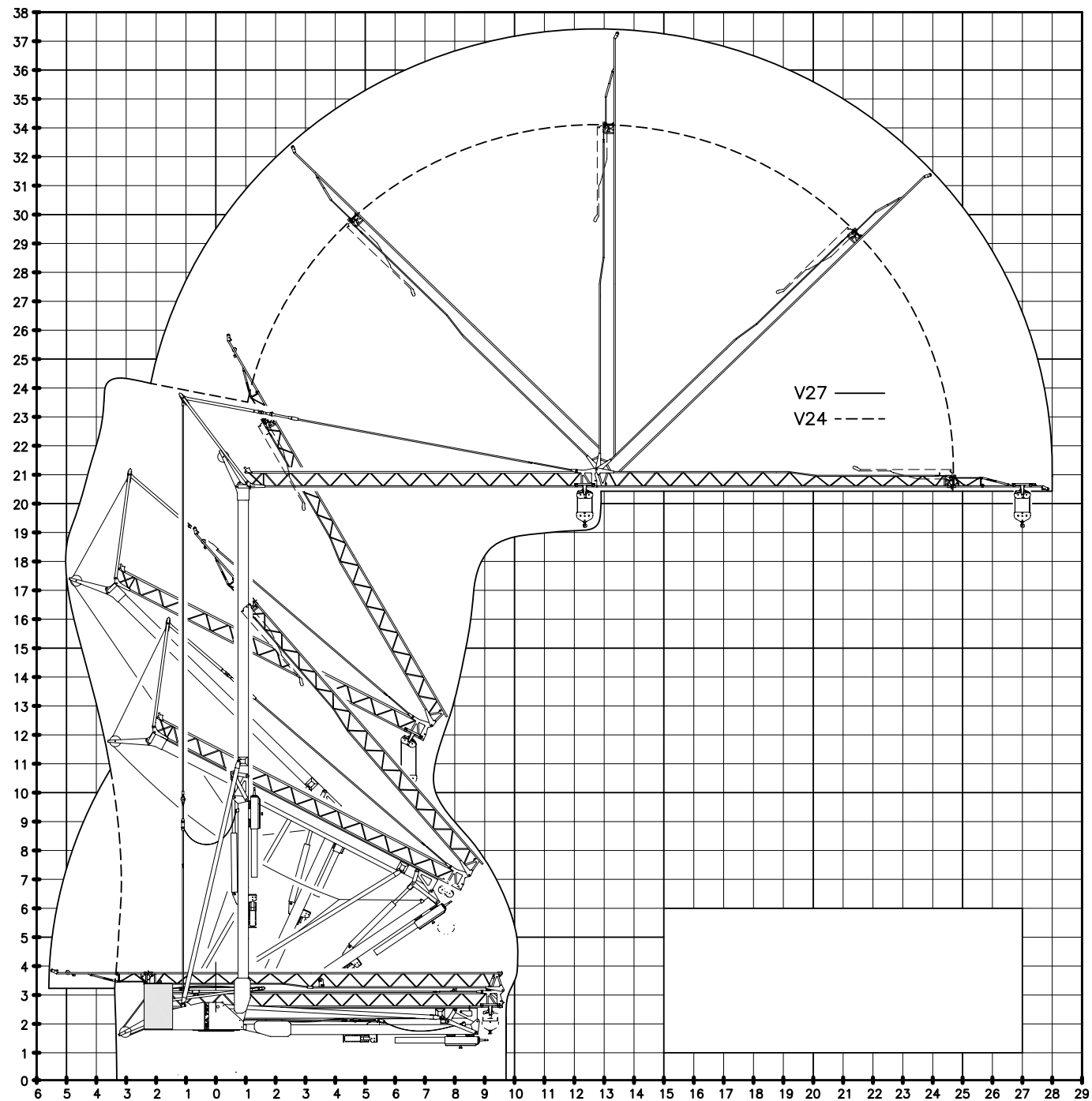
### LIFTING TABLE

V27

|  |    |      |   |     |      |      |      |      |      |     |     |      |     |      |
|--|----|------|---|-----|------|------|------|------|------|-----|-----|------|-----|------|
|  | m  | 2.2  | 5 | 9.5 | 11   | 13   | 15   | 17   | 19   | 21  | 23  | 24.1 | 25  | 27   |
|  | kg | 2500 |   |     | 2085 | 1707 | 1438 | 1237 | 1082 | 957 | 856 | 808  | 771 | 700  |
|  | m  | 2.2  | 5 | 8   | 11   | 13   | 15   | 16.9 | 19   | 21  | 23  | 24   | 25  | 26.2 |
|  | kg | 1200 |   |     |      |      |      |      | 1043 | 923 | 825 | 778  | 743 | 700  |
|  | m  | 2.2  | 5 | 8   | 11   | 13   | 15   | 17   | 19.2 | 21  | 23  | 24   | 25  | 25.5 |
|  | kg | 1000 |   |     |      |      |      |      |      | 893 | 797 | 756  | 718 | 700  |
|  | m  | 2.2  | 5 | 7   | 9    | 11   | 13   | 15   | 17   | 19  | 20  | 21   | 22  | 23.6 |
|  | kg | 600  |   |     |      |      |      |      |      |     |     |      |     |      |
|  | m  | 2.2  | 5 | 7   | 8.4  | 11   | 13   | 15   | 17   | 19  | 20  | 21   | 22  | 23.6 |
|  | kg | 2500 |   |     | 1790 | 1462 | 1229 | 1055 | 919  | 863 | 811 | 765  | 700 |      |

# C27

SELF-PROPELLED SELF-ERECTING CRANE



## The power and precision of the Kraxcle C27 Self-erecting crane

When you are looking for a self-erecting crane that combines power, versatility and precision, the Kraxcle C27 is the ideal choice. This crane offers everything you need to keep your construction project running smoothly.

### IMPRESSIVE LIFTING CAPACITY AND REACH

The Kraxcle C27 has a maximum lifting capacity of no less than 2,500 kg, which makes the crane extremely suitable for heavy tasks on the construction site. In addition, this crane is designed to deliver excellent performance even at great reaches. At a radius of 27 meters, the Kraxcle C27 can still lift 700 kg.

### FLEXIBLE HOOK HEIGHT

The standard hook height of the Kraxcle C27 is 19.5 metres, ideal for many construction site applications. For added flexibility, the boom can be topped at a 30-degree angle, achieving a maximum hook height of 32.1 metres. This makes the crane suitable for both lower and higher construction projects.

### STABLE AND COMPACT DESIGN

The crane is equipped with hydraulically extendable outriggers, which ensure optimum stability during use. Furthermore, the outrigger dimensions are compact, with a footprint of only 4.2 x 5 meters. This makes the crane easy to position on tight construction sites.

### SUSTAINABLE ELECTRIC DRIVE

At Kraxcle we consciously choose 100% electric self-erecting cranes. The Kraxcle C27 can easily be connected to a standard 230V connection, which is both practical and environmentally friendly. The crane can operate at different power levels - 3kW, 6kW and 12kW. This multi-deployability makes the Kraxcle C27 suitable for a wide range of activities.

### MAXIMUM PRECISION IN MOVEMENT

One of the most distinctive features of the Kraxcle W24 is the infinitely variable control of all movements. This means that you can operate the crane with extreme precision, which is essential for precise lifting operations. The crane can also be driven and rotated at different speeds, which further increases flexibility and user-friendliness.

### TRACKS SUITABLE FOR ANY TERRAIN

The crawler tracks provide a self-erecting crane that can work on any surface and terrain. This makes the Kraxcle C27 suitable for use on both soft and hard surfaces, giving the crane maximum versatility on different construction sites.

### CONCLUSION: THE PERFECT SELF-ERECTING CRANE

The Kraxcle C27 combines power, flexibility, durability and precision in one compact machine. With an impressive lifting capacity, a flexible reach and an environmentally friendly electric drive, this self-erecting crane is the perfect choice for any construction site. Thanks to its easy operation and versatile applications, the Kraxcle C27 is not only a practical, but also a future-proof investment. Contact us today and discover how the Kraxcle C27 can take your construction project to the next level!





**ULTIMATE PRECISION AND CONTROL**



**Stepless  
control**



"The Kraxcle C27 is built to perform: The self-erecting crane can be moved effortlessly when set up and is designed to handle all terrains and conditions."

# Move Free, Lift Smart

## EASE OF USE AND TRANSPORT

Operating the crane is very easy, because of the advanced remote control, which can control both turning and driving. What makes our crawler cranes truly unique is the ability to move the crane when erected. This means that you don't lose time setting up and dismantling when you need the crane at a new location. This not only increases your productivity, but also your flexibility on the construction site.

In addition, our crane offers a unique transport height of just 3.10 metres. This compact design makes transport and storage easier than ever, without compromising on performance.

## SAFETY

Safety is paramount at Kraxcle, which is why the C27 is equipped with hydraulic jacks, allowing the crane to be set up quickly and safely, ready to run in just 7 minutes.

Our self-erecting cranes are developed with both ease of use and safety in mind. Every detail has been carefully considered to minimize risk. Whether it's solid construction, intuitive controls or smart safety systems, our cranes are built to perform in the most demanding conditions without compromising on safety. Together we are building a safe and successful future.



# KRAXCLE

MOVE FREE, LIFT SMART

**KRAXCLE**

Houtdraaier 14

7951 ZB Staphorst, NL

[sales@kraxcle.com](mailto:sales@kraxcle.com)

Tel.: +31(0)85 - 08 79 310

**KRAXCLE.COM**